

UNLESS OTHERWISE SPECIFIED:
DIMENSIONS ARE IN MILLIMETERS
SURFACE FINISH: Ra 6,3
LINEAR TOL.: +/- 0,2 mm.
ANGULAR TOL.: +/- 0,5°

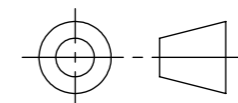
FINISH:

DEBURR AND
BREAK SHARP
EDGES

TITLE:
Ball Valve
Type 5092 DN80 - AISI 316L

	NAME	DATE	SIGNATURE
DRAWN	-	8-11-2019	
CHK'D	GPo	00-00-0000	
APPV'D	GPo	00-00-0000	
MFG	-	-	
Q.A	-	-	
	Last saved	18-2-2020	
PROJECT NAME: -			

PROJECTION TYPE:



MATERIAL:

MASS: 12,54 kg



Oostgouweweg 5
2407 AD Alphen a/d Rijn
The Netherlands
Phone: (+31)172 - 494965
Fax: (+31)172 - 494969

DWG NO.

BK.500.022.00

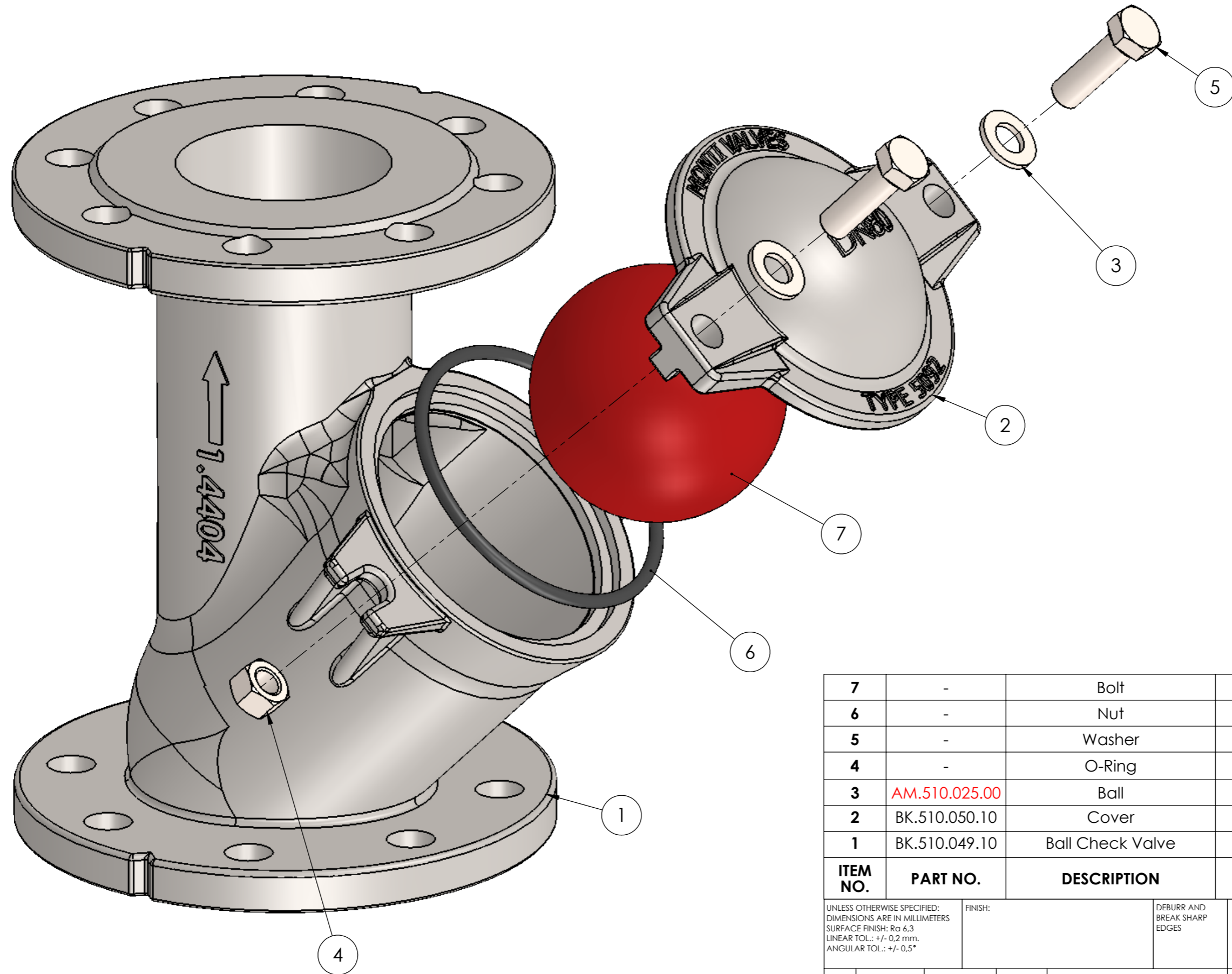
A3

SCALE:1:3

DO NOT SCALE DRAWING

REV. 0

SHEET 1 OF 2



ITEM NO.	PART NO.	DESCRIPTION	REMARK	MATERIAL	QTY
7	-	Bolt		AISI 316L	2
6	-	Nut		AISI 316L	2
5	-	Washer		AISI 316L	2
4	-	O-Ring		NBR 70	1
3	AM.510.025.00	Ball		NBR	1
2	BK.510.050.10	Cover		AISI 316L	1
1	BK.510.049.10	Ball Check Valve		AISI 316L	1

UNLESS OTHERWISE SPECIFIED:
 DIMENSIONS ARE IN MILLIMETERS
 SURFACE FINISH: Ra 6,3
 LINEAR TOL.: +/- 0,2 mm.
 ANGULAR TOL.: +/- 0,5°

FINISH:

DEBURR AND BREAK SHARP EDGES

TITLE: **Ball Valve**
 Type 5092 DN80 - AISI 316L

NAME	DATE	SIGNATURE	PROJECTION TYPE:	MATERIAL:	DWG NO.	REV.
DRAWN	-	8-11-2019			BK.500.022.00	0
CHK'D	GPo	00-00-0000				
APPV'D	GPo	00-00-0000				
MFG	-	-				
Q.A	-	-				
Last saved			18-2-2020			
PROJECT NAME:			-	MASS: 12,54 kg	SCALE:1:2	DO NOT SCALE DRAWING

Oostgouweweg 5
 2407 AD Alphen a/d Rijn
 The Netherlands
 Phone: (+31)172 - 494965
 Fax: (+31)172 - 494969

File name: S:\BouwGroep\500.kleppen\BK - balkeerlep\BK.500.022.00 - Montivaive Balkeerlep DN80 SS316\BK.500.022.00